

THE 2008 HARDWAY RACE

SAILING INSTRUCTIONS

May 17-18, 2008

Pierpont Bay Yacht Club
Ventura, CA

Santa Barbara Sailing Club
Santa Barbara, CA

- 1.0 RULES:** The Race will be governed by the *rules* as defined in the *Racing Rules of Sailing*. The PHRF MIR Rule is not in effect. This modifies PHRF Class Rule 8.
- 2.0 ENTRIES:** Valid PHRF rating certificates are required for all HARDWAY Course PHRF classes and Coastwise Course PHRF spinnaker class entrants. All courses are designated as PHRF Category 3 and will use area A ratings for a random leg course. This modifies PHRF Class Rule 10. PHRF rating certificates are not required for Coastwise Course PHRF non-spinnaker class entrants. Coastwise Course non-spinnaker class entrants without PHRF rating certificates will be assigned a temporary handicap for this race only by the race management team. ORCA TCF ratings will be applied to ORCA Multihull Class boats. Registration is required by 1015 PDT on Saturday May 17, 2008.
- 3.0 NOTICES TO COMPETITORS:** Notices to competitors will be posted at Santa Barbara Sailing Club's (SBSC) Race Management headquarters.
- 4.0 CHANGES IN SAILING INSTRUCTIONS:** Any change in the sailing instructions will be posted by 1030 PDT on Saturday May 17, 2008, at the Skippers' Meeting at SBSC.
- 5.0 RACE SCHEDULE:** The Skippers' Meeting will be held on Saturday, May 17, 2008, at 1030 hours PDT at SBSC. The Race will begin on Saturday, May 17, 2008, with the warning signal for the first class scheduled for 1155 hours PDT.
- 6.0 CLASSES:** Given sufficient entrants, there will be two HARDWAY Course spinnaker classes (HARDWAY **A & B**), two Coastwise Spinnaker classes (Coastwise Spinnaker Class **A & B**), two Coastwise Non-Spinnaker classes (Coastwise NS Class **A & B**), and an ORCA handicapped Multihull Class. Class breaks and order of starts will be posted by 1030 PDT on Saturday May 17, 2008, at the Skippers' Meeting at SBSC.

The Class Flags to be used for starting the classes listed above will be:

Hardway ('round Santa Cruz):

Class **A** - Code Flag Numeral "1" (red dot on white)



Class **B** - Code Flag Numeral "2" (white dot on blue)



Coastwise Spinnaker ('round Anacapa):

Class **A** - Code Flag Numeral "3" (red, white, blue)



Class **B** - Code Flag Numeral "4" (white cross on red)



Coastwise Non-Spinnaker:

Class **A** - Code Flag Numeral "5" (yellow, blue)



Class **B** - Code Flag Numeral "6" (black over white)



ORCA Multihull:

Class **ORCA** – Code Flag Numeral "7" (yellow over red)



Class breaks will be based on PHRF ratings and the final decisions will be made by the Race Committee and posted by 1030 PDT on Saturday May 17, 2008, at the Skippers' Meeting at SBSC.

PHRF Non-spinnaker classes are defined as follows:

- * No spinnakers or spinnaker-like sails such as flashers, cruising 'chutes, MPS's, gennakers, etc. are allowed.
- * All headsails must meet the measurement requirements of RRS Rule 50.4.
- * Only one spinnaker pole or whisker pole of 1.4J maximum length shall be used at a time and, when in use, shall be attached to the foremost mast.
- * Use of headsails larger than 155% LP carries a 6 second per mile penalty unless the boat is handicapped for the sail.
- * More than one headsail may be carried set, and the headsails need not be attached to the forestay.
- * The minimum number of persons aboard shall be 2.

7.0 RACING AREA: The racing area is the Santa Barbara Channel between Santa Barbara harbor and Ventura harbor, including the waters surrounding Anacapa and Santa Cruz Islands.

8.0 THE COURSES: When an oil platform is a mark of the course, its associated mooring buoy(s) are part of the mark and shall be passed on the same side as the oil platform.

8.1 HARDWAY COURSE: From the start line off Santa Barbara, leave Mark 1 and Santa Cruz Island to port, and finish in the Ventura Harbor entrance channel. The handicap length of this course is 67 nm.

8.2 COASTWISE SPINNAKER COURSE: From the start line off Santa Barbara, leave Mark 1 and Anacapa Island to port, and finish in the Ventura Harbor entrance channel. The handicap length is 47 nm.

8.3 COASTWISE NON-SPINNAKER COURSE: From the start line off Santa Barbara, leave Mark 1, drilling platforms C, Habitat and Grace to port, and finish in the Ventura Harbor entrance channel. The handicap length is 29 nm.

8.4 ORCA MULTIHULL COURSE: From the start line off Santa Barbara, leave Mark 1 and Anacapa Island to port, and finish in the Ventura Harbor entrance channel. The handicap length is 47 nm.

9.0 MARKS:

MARK 1: An inflatable mark set by the Race Committee approximately 0.5 nm to windward of the start line. All classes leave to port.

ANACAPA ISLAND: Coastwise Spinnaker classes and ORCA Multihull class leave to port.

SANTA CRUZ ISLAND: Hardway Course classes leave to port.

DRILLING PLATFORM "C": Coastwise Course Non-spinnaker classes leave to port. Latitude 34° 19' 58" N; Longitude 119° 37' 51" W.

DRILLING PLATFORM HABITAT: Coastwise Course Non-spinnaker classes leave to port. Latitude 34° 17' 12" N; Longitude 119° 35' 20" W.

DRILLING PLATFORM GRACE: Coastwise Course Non-spinnaker classes leave to port. Latitude 34° 10' 47" N; Longitude 119° 28' 5" W.

10.0 THE START: *Check in with the Race Committee boat by radio or verbally prior to the warning signal for the first start. The Race Committee will not respond during the start sequence.*

10.1: The Race will be started in accordance with RRS Rule 26. Class assignments and expected order of starts will be finalized and posted not later than 1030 PDT Saturday, May 17, 2008 at the Skippers' Meeting at SBSC.

10.2: The starting line will be between an orange inflatable mark at the port end and an orange flag or shape on the Race Committee boat at the starboard end. The starting line will be south of the Santa Barbara harbor jetty. The Race Committee will monitor VHF channel 71.

10.3: Boats whose warning signal has not been made shall avoid the starting area.

11.0 RECALLS:

11.1 Individual recalls will be signaled in accordance with RRS Rule 29.1 (1 sound signal plus code flag "X").

11.2 General recalls will be signaled in accordance with RRS Rule 29.2 (2 sound signals plus code flag "first substitute"). The class recalled will then drop to the end of the scheduled starts, thereby starting approximately 5 minutes after the start of the last scheduled class. Classes not affected by the general recall will start in the order scheduled. This changes RRS Rule 29.2.

12.0 THE FINISH: The finish line, depicted in Figure 1, shall be in the Ventura Harbor entrance channel on a line between the seaward-most palm tree on the starboard shore and a light pole on the port shore.

SPINNAKERS SHALL BE STRUCK AT THE ELBOW OF THE DETACHED BREAKWATER. BOATS SAILING BEYOND THIS POINT WITH SPINNAKERS SET WILL BE SCORED DSQ (disqualified). This changes Rules 63.1 and A5.

The Race Management Team will monitor VHF channel 71 on station at the finish line. The first boat to finish is requested to notify the Race Management Team when 30 minutes from the finish line. Boats finishing after dark shall illuminate their mainsail number for identification and hail the Race Committee for acknowledgement. Failure to do so carries no penalty.

13.0 TIME LIMIT: The time limit to complete the race is 1000 hours PDT on Sunday, May 18, 2008. Boats not finished within this limit will be scored DNF (did not finish). Any boat remaining on the course after 0030 hours PDT Sunday shall check in at 0030 and at 2-hour intervals thereafter. Check-ins shall be made to PBYC on VHF channel 71 or by phone to PBYC at 805-644-6672. PBYC Race Chair's cell phone number is 805-444-0223.

14.0 PROTESTS:

14.1 Protests shall be written on forms available at PBYC and lodged there within 2 hours of the finish of the protesting boat, within 2 hours of the protesting boat's return to harbor if she retires or by 0800 hours PDT on Sunday, May 20, 2007, whichever is later.

15.0 PENALTIES: Racers are reminded that the Two Turns penalty, RRS Rule 44.2, applies.

16.0 TROPHIES: Trophies will be awarded three deep in each class with five or more entries. Each entrant will receive a participation plaque. The following perpetual trophies will also be awarded:

CLUB CHAMPIONSHIP – The places of the top three PHRF Spinnaker boats from each club will be totaled and the club with the lowest points will be awarded this trophy.

OVERALL WINNER - This trophy will be awarded to the skipper of the boat with the lowest corrected time among all PHRF classes sailing the HARDWAY Course. The winning skipper will receive a take-home trophy.

FIRST TO FINISH - This trophy will be awarded to the skipper of the first monohull boat to finish the HARDWAY Course. The winning skipper will receive a take-home trophy.

COASTWISE SPINNAKER - This trophy will be awarded to the skipper of the boat with the lowest corrected time among all boats sailing the Coastwise Course spinnaker classes. The winning skipper will receive a take-home trophy.

COASTWISE NON-SPINNAKER - This trophy will be awarded to the skipper of the boat with the lowest corrected time among all boats sailing the Coastwise Course non-spinnaker classes. The winning skipper will receive a take-home trophy.

17.0 SAFETY:

17.1: Boats racing the HARDWAY Course and Coastwise Spinnaker Course shall carry the equipment specified in the PHRF Standard Equipment List for Category 3 races. Multihull entries shall carry the safety equipment specified by ORCA.

17.2: Boats racing the Coastwise Non-spinnaker Course shall carry the equipment specified for PHRF Category 3 races. The minimum number of crew, including skipper, shall be 2.

17.4: Any boat that abandons, retires, or in any way does not finish the race shall notify the Race Management Team in person, by radio on VHF channel 71, or by telephone to PBYC at 805-644-6672. PBYC Race Chair's cell phone number is 805-444-0223. Failure to notify will result in a Coast Guard search.

18. DISCLAIMER OF LIABILITY: Competitors in this event are participating entirely at their own risk. See RRS 4, Decision to Race. The race organizers (organizing authority, race committee, protest committee, host clubs, sponsors, or any other organization or official) will not be responsible for damage to any boat or other property or the injury to any competitor, including death, sustained as a result of participation in this event. By participating in this event, each competitor agrees to release the race organizers from any and all liability associated with such competitor's participation in this event to the fullest extent permitted by law.

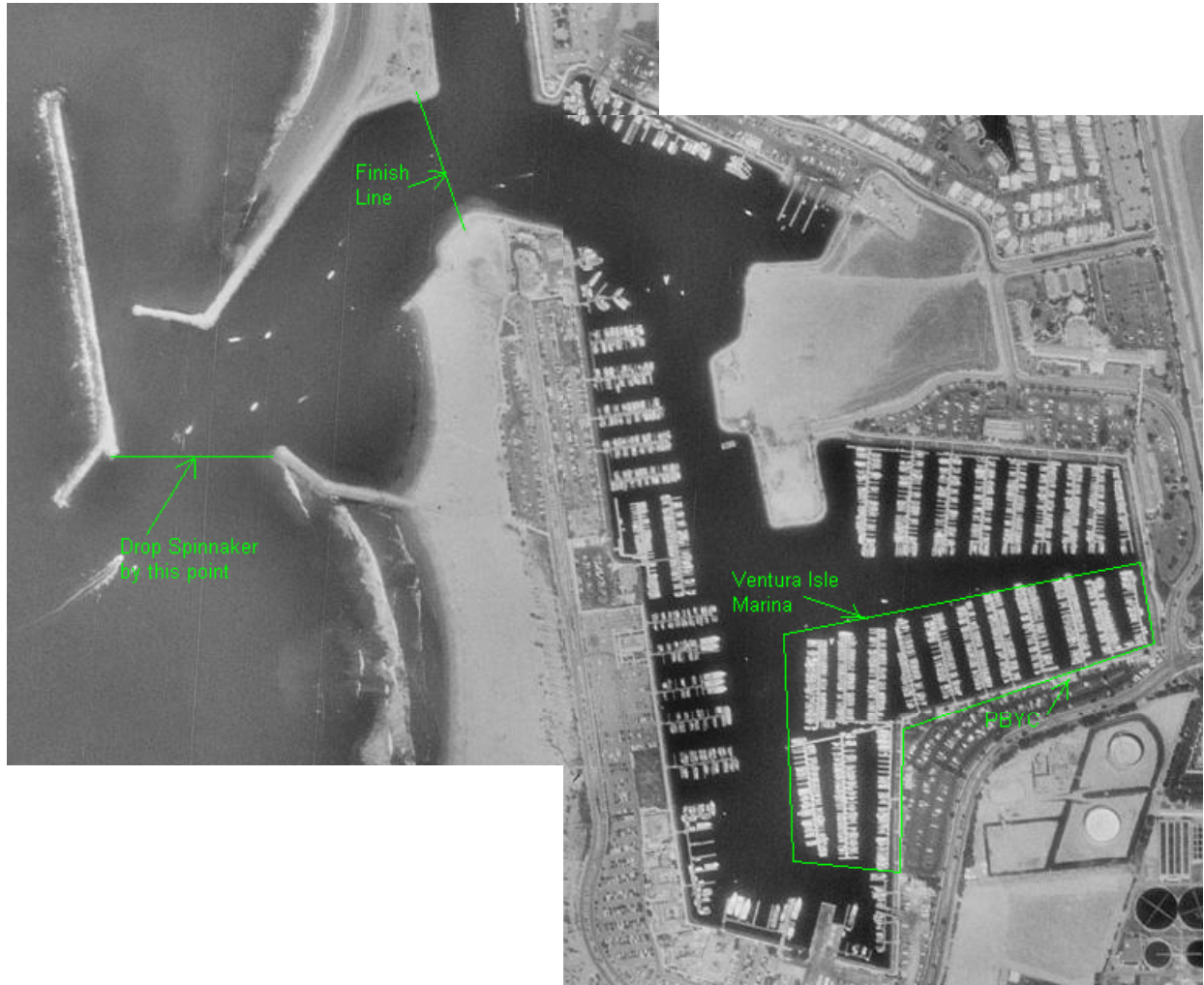


Figure 1: Ventura Harbor Entrance Showing Finish Line, Marina, and PBYC