



Santa Barbara Sailing Club

22nd Annual Cinco de Mayo Regatta:

May 1st and May 2nd 2010

Sailing Instructions

1 RULES

1.1 This regatta will be governed by the ‘rules’ as defined in the Racing Rules of Sailing 2009-2012, the rules of the participating classes (except any of those that are altered by these Sailing Instructions), and by these Sailing Instructions.

2 ENTRY

2.1 Eligible boats may be entered by completing an entry form available at www.sailsbsc.org prior to the regatta or by registering on-site at the Santa Barbara Sailing Club clubhouse. Registration must be completed no later than 10:00 on May 1st. Exceptions are at the discretion of the Race Committee.

2.2 All one-design entries shall be a member in good standing with their respective one-design class.

2.3 Area Random Leg PHRF handicaps will be used. PHRF handicap ratings will be applied per PHRF certificate or by listing if not certified. Valid rating certificate must be presented, or on file with SBSC.

3 NOTICE TO COMPETITORS

Notices to competitors will be posted on the official notice board located on the front of the Santa Barbara Sailing Club clubhouse.

4 SKIPPERS MEETING

A skippers meeting will be held on May 1st at 10:00 at the Santa Barbara Sailing Club clubhouse.

5 CHANGES TO SAILING INSTRUCTIONS

Any change to the sailing instructions will be posted before 10:00 on the day that it will take affect.

6 SCHEDULE OF RACES

6.1 As many races within the allotted time limits will be run for each class on each day of the regatta.

6.2 The scheduled time of the warning signal for the first race Saturday is 12:00.

6.3 The scheduled time of the warning signal for the first race Sunday is 12:00.

6.4 The warning signal for succeeding classes will be made as soon as practicable.

6.5 No warning signal will be made after 16:30 on Saturday.

6.6 No warning signal will be made after 15:30 on Sunday.

7 CLASS FLAGS

Class flags will be: (NP = Numeral Pennant)

Class	Flag
F18	NP1
I14	NP2
PHRF	NP3
J105	NP4
Melges 24	NP5
J24	NP6
Mercury	NP7

8 RACING AREAS

8.1 The starting area will be located approximately .25 nm southwest of the entrance to the Santa Barbara Harbor.

8.2 The area defined by a line commencing at the shore of Ledbetter Beach and connecting each contiguous City of Santa Barbara swim buoy is classified as an obstruction in accordance with the racing rules. If a boat passes inside the imaginary buoy line, they are to exit immediately and retire from the race.

9 THE COURSES

9.1 The courses to be sailed are indicated in Attachment A.

9.2 The course to be sailed will be signaled from the Race Committee boat using numbered placards no later than the appropriate class preparatory signal.

9.3 When a “T” placard follows the course number, the course shall be sailed two times around. To start the second iteration, boats must sail through the finish line.

10 MARKS

10.1 Marks will be orange inflatable tetrahedrons, or yellow/white cylinders with reflective tape stripes on the top and bottom of each mark.

10.2 All marks are to be rounded to port.

11 THE START

11.1 Races will be started in accordance with RRS Rule 26. The warning signal will be given 5 minutes prior to the start. A series of sounds may be given approximately one minute prior to the 5-minute warning as a courtesy to the class.

11.2 The starting line will be between an orange buoy on the starboard end of the line and the Race Committee boat displaying an orange flag as illustrated in Attachment A.

11.3 Boats whose warning signal has not been made shall avoid the starting area.

11.4 A boat starting later than 4 minutes after her starting signal will be scored Did Not Start (DNS). This changes rule A4.1.

11.5 The starting line is restricted except when starting.

11.6 The Race Committee may make an attempt to hail over early boats on VHF channel 72.

12 THE FINISH

12.1 The finishing line will be between an orange buoy on the port end of the line and the Race Committee boat displaying an orange flag as illustrated in Attachment A. The Race Committee boat “splits” the start and finishing line.

12.2 The finish line is restricted except when finishing.

13 TIME LIMITS

13.1 The time limit for the first boat of each class to finish a race will be 1.5 hours.

13.2 Boats failing to finish within 30 minutes after the first boat sails the course and finishes will be scored Did Not Finish (DNF). This changes RRS 35 and A4.1.

14 PROTESTS

14.1 Protests forms are available at the SBSC clubhouse. Protests shall be delivered there within the protest time limit.

14.2 Protests must be filed within one hour of the docking of the RC boat.

14.3 Protests filed on the Saturday may be heard on Sunday prior to the days racing.

15 SCORING

15.1 The Low Point scoring system of Appendix A will apply.

15.2 When eight or more races have been completed in a class, a boat’s series score will be the total of her race scores excluding her worst score.

15.3 One race is required to be completed to constitute a series.

16 SAFETY

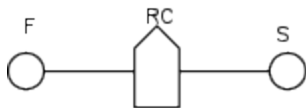
Santa Barbara Channel is an open-ocean venue. Each sailor is must provide adequate safety and cold water gear. PFDs must be worn at all times while on the water. Unprepared teams may be sent to the beach at the discretion of the race committee. There will be no redress for such action.

Attachment A

Course Chart

W2
○

W1
○



L1
○

L2
○

1. Start – W1 – L1 – Finish
2. Start – W2 – L2 – Finish
3. Start - W1 – L1 – W1 – L1 – Finish
4. Start – W2 – L2 – W2 – L2 – Finish
5. Start - W1 – L1 – W1 – L1 – W1 – L1 Finish
6. Start – W2 – L2 – W2 – L2 – W2 – L2 Finish

MARKS

W1 – Orange inflatable tetrahedron approximately .5 nm upwind of the start.

W2 - Orange inflatable tetrahedron approximately .75 nm upwind of the start.

L1 – Orange inflatable tetrahedron approximately .25 nm downwind of the start.

L2 – Orange inflatable tetrahedron approximately .5 nm downwind of the start.

S – Orange buoy to starboard of the Race Committee boat

F – Orange buoy to port of the Race Committee boat